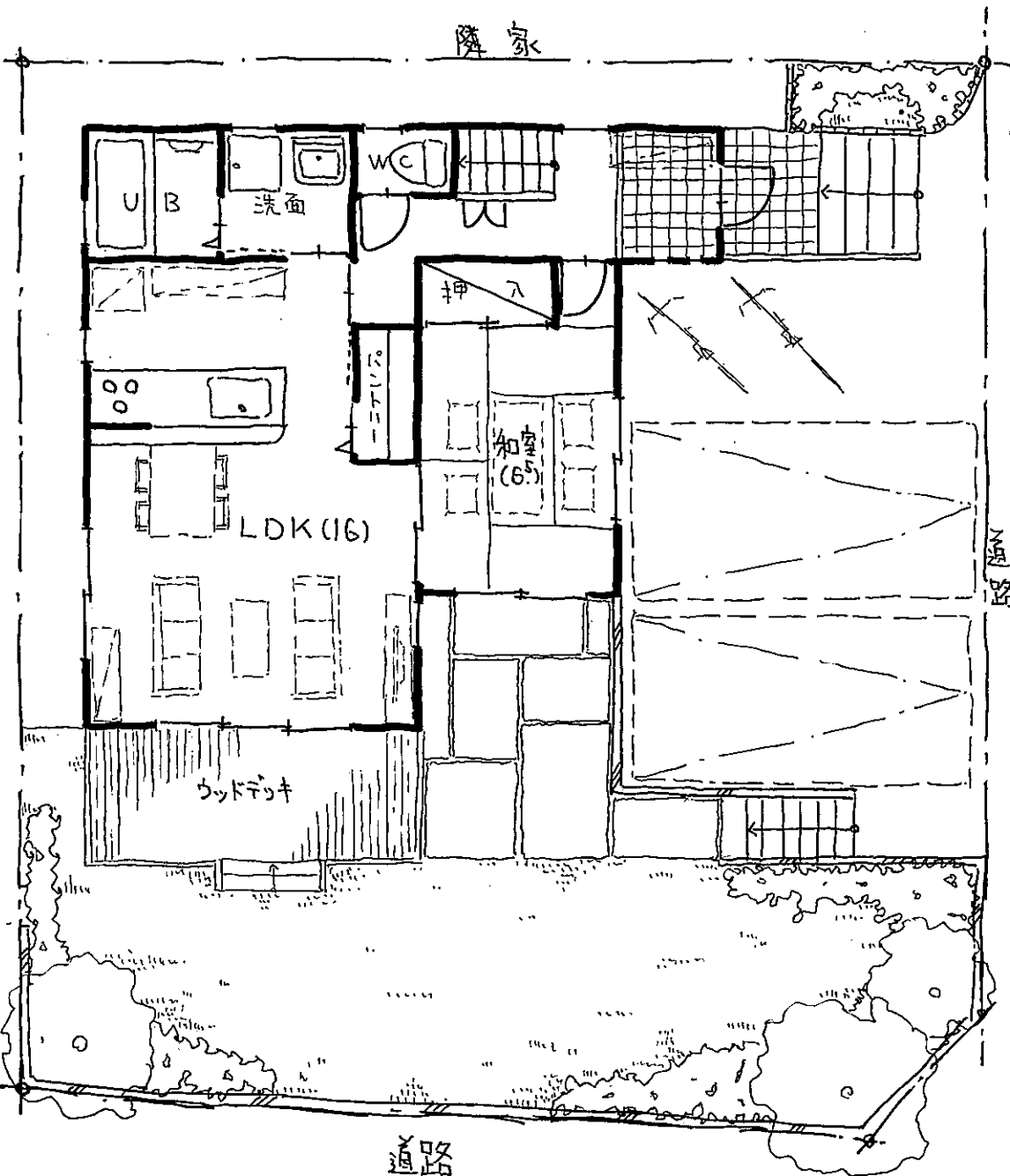


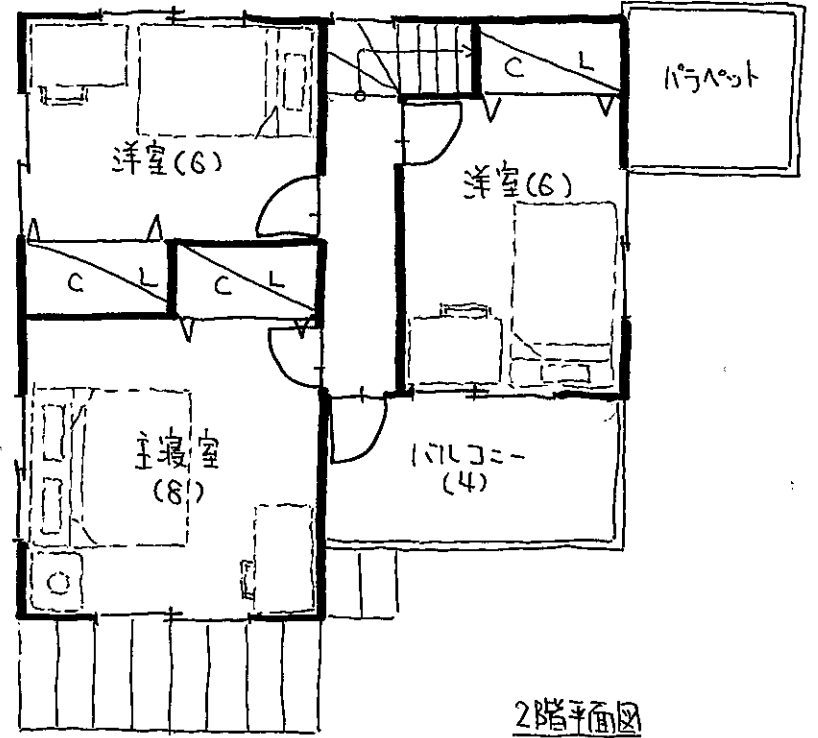
# 宇治市五柱福角

隣家



道路

1階平面図・配置図



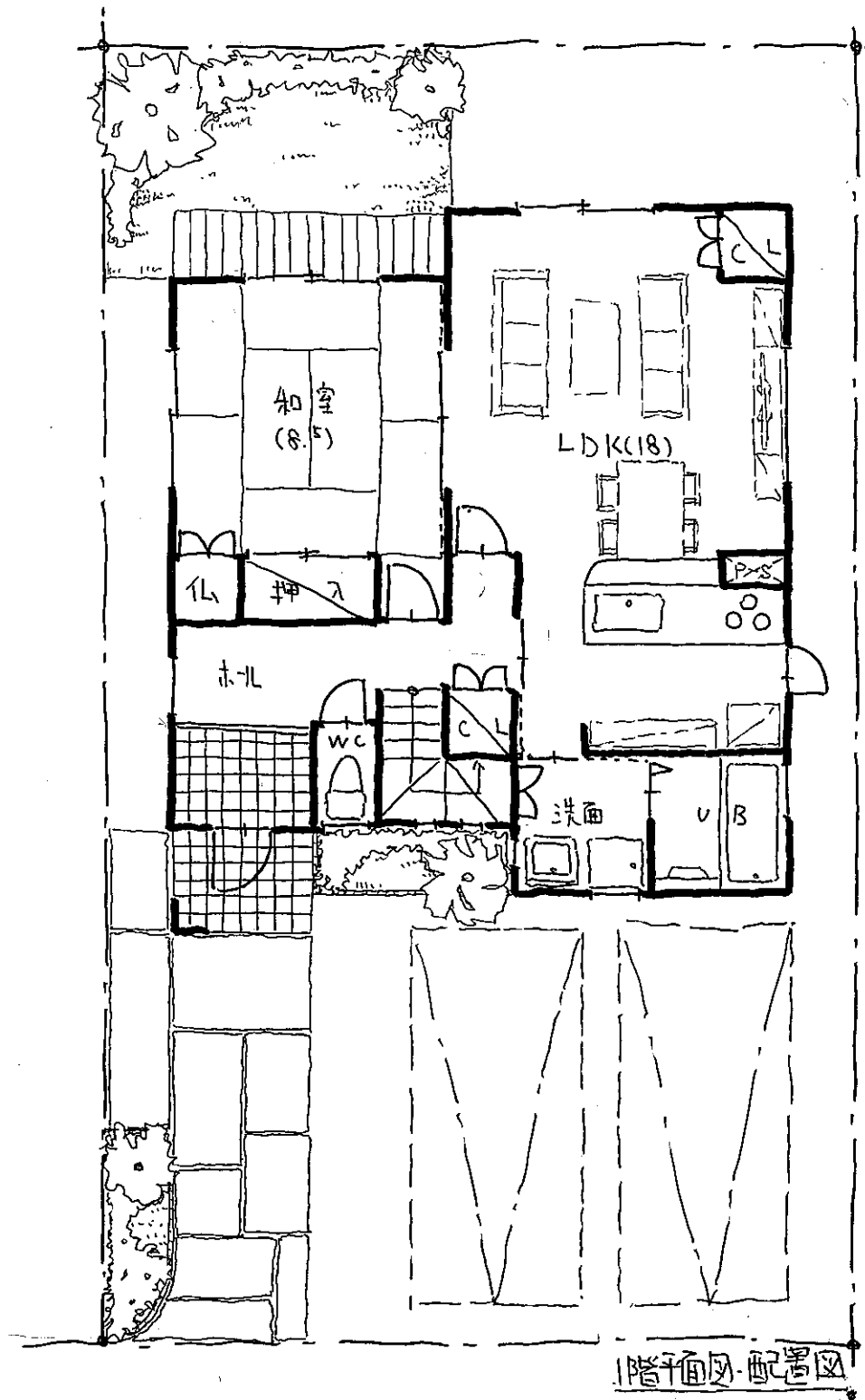
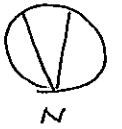
2階平面図

敷地面積  $161.88 \text{ m}^2$  (48.97坪)

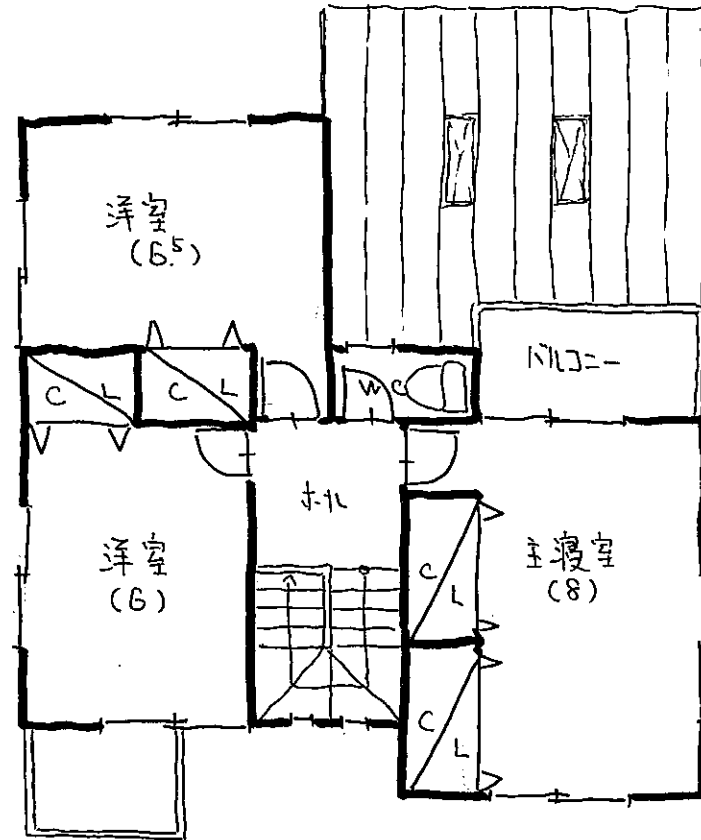
建物  
 1階  $69 \text{ P} \times 0.81 = 55.89 \text{ m}^2$   
 2階  $52 \text{ P} \times 0.81 = 42.12 \text{ m}^2$

延べ床  $98.01 \text{ m}^2$  (29.64坪)

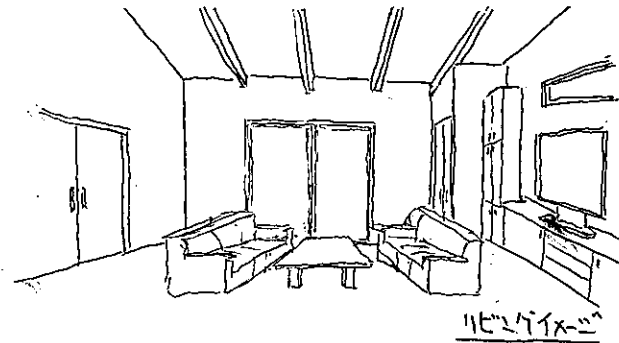
# 宇治市南陵町5丁目



1階平面図・配置図



2階平面図



リビング

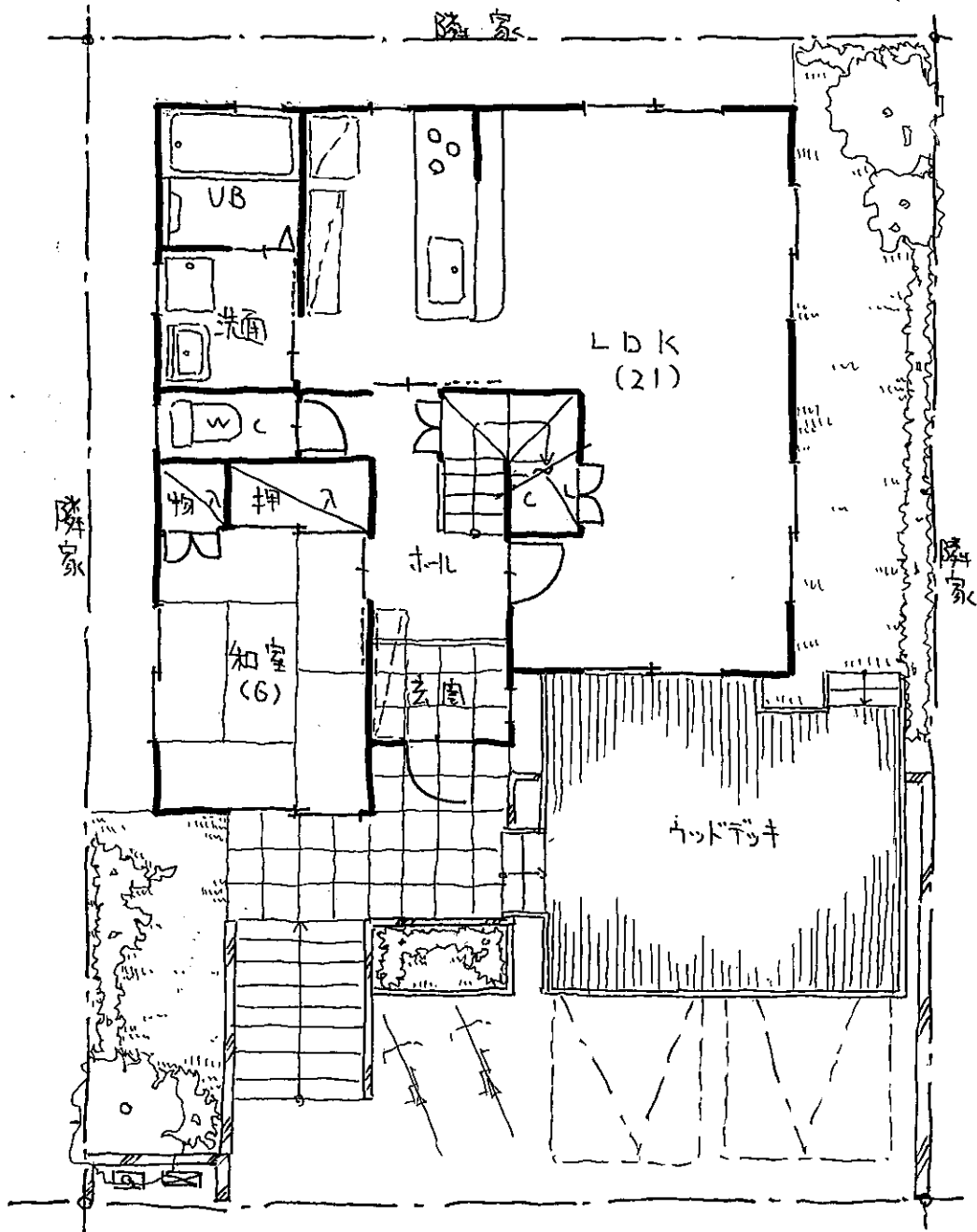
土地面積  $177.03\text{m}^2$  (53.54坪)

建物 1階  $81\text{P} \times 0.81 = 65.61\text{m}^2$

2階  $58\text{P} \times 0.81 = 46.98\text{m}^2$

延床面積  $112.59\text{m}^2$  (34.05坪)

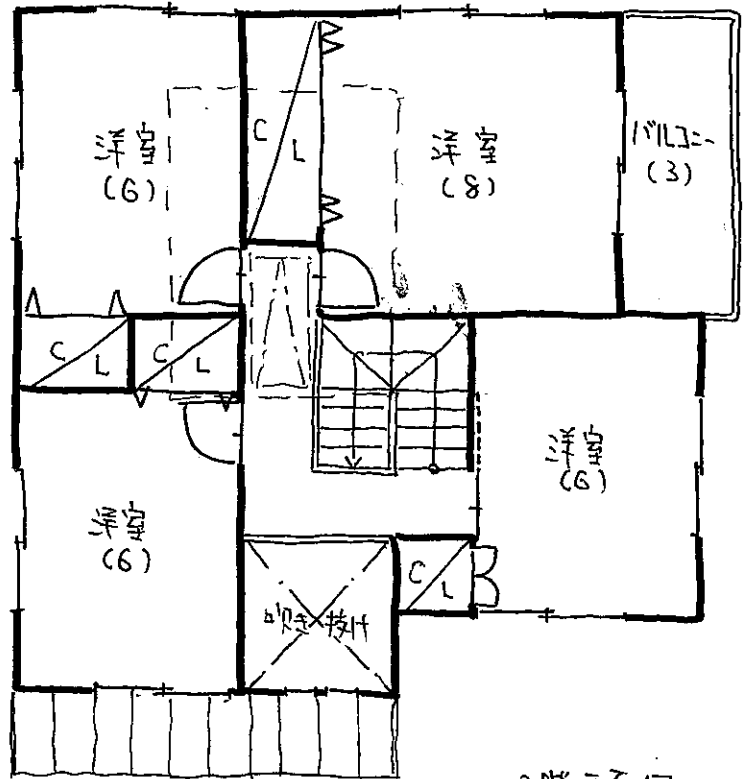
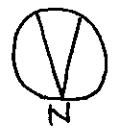
宇治市琵琶台2丁目新築提案プラン



道路(幅員6m)

1階平面図・配置図

株式会社UNITY



2階平面図



天井収納庫

敷地  $164.43m^2$  (49.74坪)

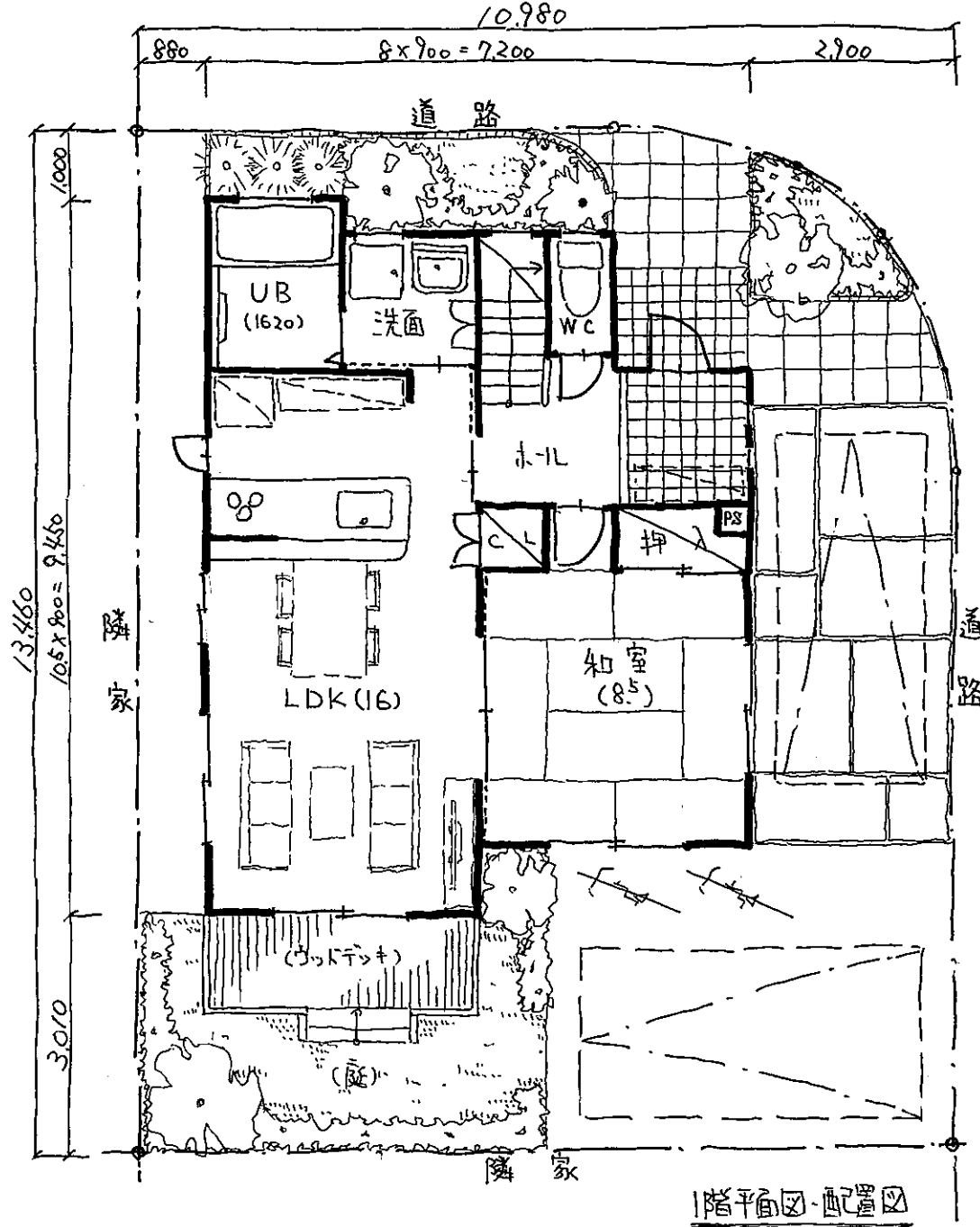
建物  
1階  $80m \times 0.9m = 64.8m^2$   
2階  $69m \times 0.81m = 55.89m^2$

延べ床  $120.69m^2$  (36.50坪)

建ぺい  $164.43m^2 \times 0.5 = 82.215m^2 > 64.8m^2$  (OK)

容積  $164.43m^2 \times 0.8 = 131.544m^2 > 120.69m^2$  (OK)

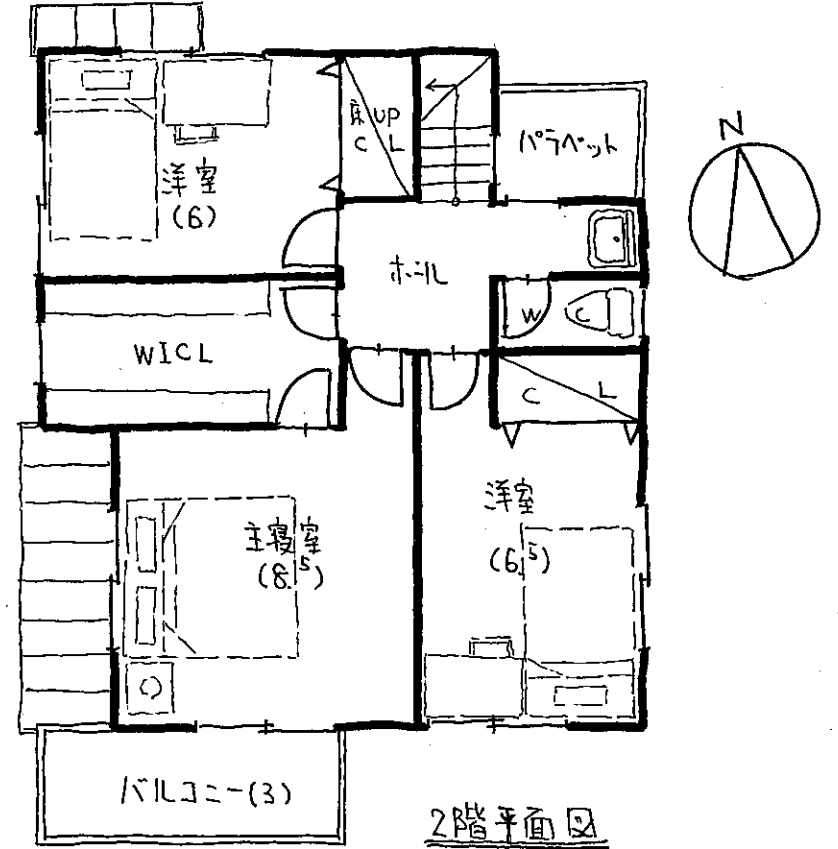
# 宇治市伊勢田町名木1丁目 新築プラン



敷地面積  $142.51 \text{ m}^2$  (43.10坪) 50%+10%, 80%

建ぺい率  $142.51 \text{ m}^2 \times 0.6 = 85.50 \text{ m}^2 > 59.13 \text{ m}^2$  OK

容積率  $142.51 \text{ m}^2 \times 0.8 = 114.01 \text{ m}^2 > 110.97 \text{ m}^2$  OK



建物 1階  $73 \text{ P} \times 0.81 = 59.13 \text{ m}^2$   
2階  $64 \text{ P} \times 0.81 = 51.84 \text{ m}^2$

延べ床  $110.97 \text{ m}^2$  (33.56坪)

株式会社UNITY-級建築士事務所 日越知男 H22.7.13